

GEL BATTERY 150Ah MAXX

12V Voltage
150Ah Capacity

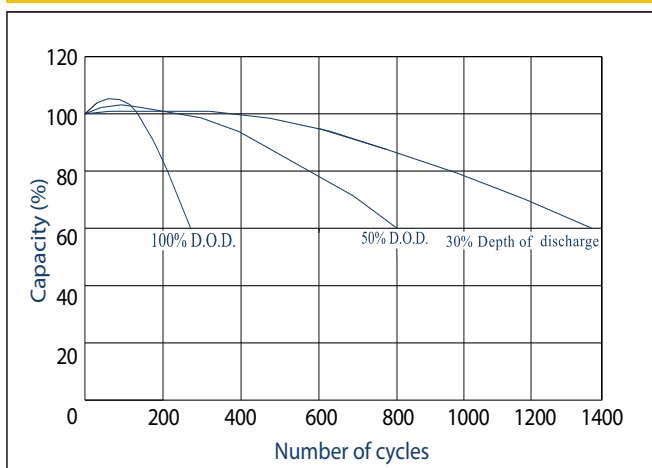


MAXX

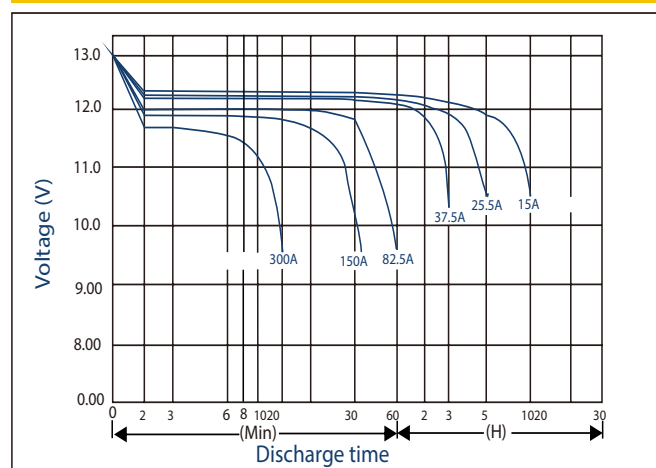
TECHNICAL DATA

INDEX	BB0003
MODEL	150Ah MAXX
Nominal voltage [V]	12
Nominal capacity [Ah]	150
Standard terminal	T2
Length [mm]	484
Width [mm]	171
Housing height [mm]	241
Overall height [mm]	241
Weight [kg]	4,2
Cyclic charging [V]	14,4-14,9
Buffer charge [V]	13,5-13,8
Self-discharge within 3 months	91%
Self-discharge within 6 months	82%
Self-discharge within 12 months	64%
Internal resistance [mΩ]	5

BATTERY LIFE

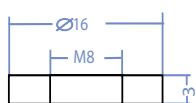


DISCHARGE CHARACTERISTICS



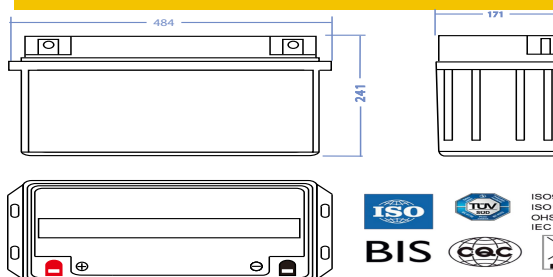
TYPE OF TERMINAL

Standard terminal T2



(in mm)

TECHNICAL FIGURE (mm)



CONSTANT-CURRENT (25°C) CONSTANT-POWER (AT 25°C) DISCHARGE TABLE

time		10min	15min	30min	1h	2h	3h	4h	5h	8h	10h	20h
9,60V	A	315	248	150,0	93,0	54,8	38,3	31,4	26,7	18,3	15,3	8,0
	W	3367	2705	1673	1055	631	447	368	315	217	180,8	95,9
9,90V	A	306,0	241,5	147,0	91,7	54,5	38,1	31,2	26,6	18,3	15,3	8,0
	W	3283	2649	1645	1042	628	445	367	314	217	181,5	95,8
10,20V	A	293	233	142,5	89,3	54,0	37,8	30,9	26,4	18,2	15,2	8,0
	W	3150	2560	1600	1018	625	442	364	312	215	180,0	95,7
10,50V	A	281	225	139,1	87,0	53,3	37,5	30,8	26,3	18,0	15,2	7,9
	W	3029	2486	1567	996	618	440	363	311	214	180,0	95,1
10,80V	A	264	213	134,0	84,8	51,9	36,5	29,9	25,5	17,4	15,0	7,9
	W	2859	2362	1515	974	604	428	353	303	207	178,5	94,5

The electrical parameters indicated on the product label may differ slightly from the specifications.



4Sun sp. z o.o. sp.k.

Annopol 4, 03-236 Warszawa

tel: (22) 114 98 05, email: biuro@4sun.eu

www.4sun.eu